

SK210D

MULTI-DISMANTLING
MACHINE

KOBELCO

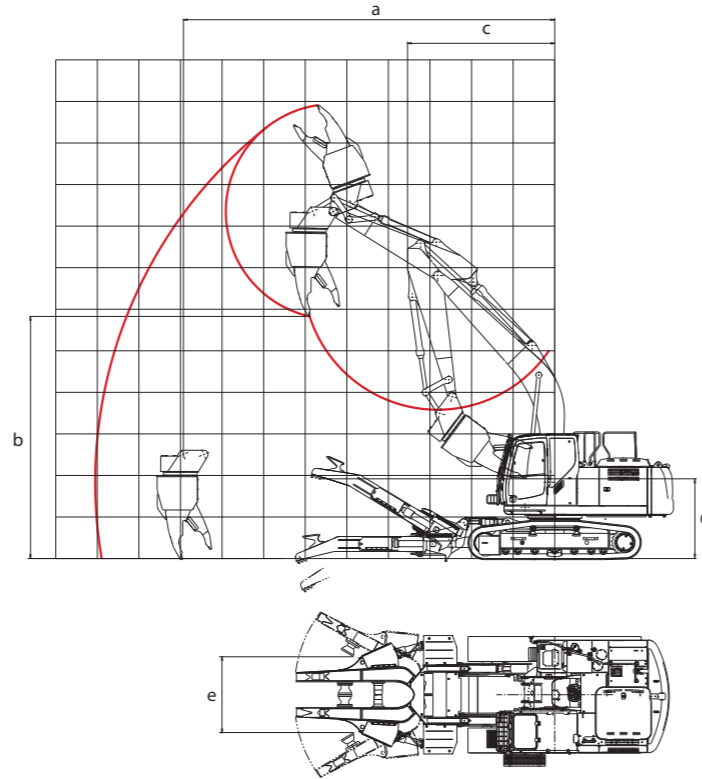
DRIVEN
BY
PASSION

■ Main Specifications

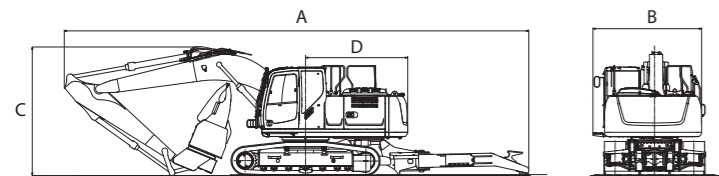
Model		SK210D	
Type		SK210D-9	
Operating weight	lb(kg)	65,917 (29,900)	
Swing speed	rpm	12.5	
Travel speed	mph(km/h)	2.2 (3.7)	
Gradeability	% (degree)	70 (35°)	
Engine	Type	HINO J05E-T1	
	Rated power output	hp(kW)/min ⁻¹	157/2,000 (117/2,000)
Fuel tank	gal(liter)	97.9 (370)	
Relief valve setting	psi(MPa)	4,975 (34.3)	
Hydraulic oil Tank/System	gal(liter)	34.3 (130) / 60.8 (230)	
Dimensions	A Overall length	ft-in(mm)	42'7" (12,970)
	B Overall width	ft-in(mm)	10'3" (3,115)
	C Overall height	ft-in(mm)	12'0" (3,600)
	D Tail swing radius	ft-in(mm)	9'5" (2,860)
Working ranges	Installed attachment		KVE720PR KV800PR
	a Max. vertical working range	ft-in(mm)	29'5" (8,960) 29'7" (9,010)
	b Max. operating height	ft-in(mm)	19'2" (5,830) 19'6" (5,940)
	c Min. swing radius	ft-in(mm)	11'7" (3,540)
	d Working height of clamp arm	ft-in(mm)	6'5" (1,960)
	e Operating width of clamp arm	ft-in(mm)	6'1" (1,850)

■ Working Ranges (Unit: ft-in [mm])

Values do not include a height of shoe lug.



The International System of Units, SI is used as units and values in { } are values in conventional units. The operating weight indicates a weight of the machine without a nibbler.



Standard Equipment
Steel over head guard for skylight, Shatter-proof laminated glass windows (front; rear), Front working lights (1 on attachment; 1 on right of upper carriage), Double slide seat, Automatic air conditioner, AM/FM radio, Emergency hammer, Hosing for rotating nibbler/breaker, 600 mm (even height) shoes, Double element air cleaner, Insect repellent net (for air conditioning condenser), Pattern changer, KOMEX remote monitoring system「KOMEXS」

Optional Equipment
Automatic attachment greasing device, 600 mm flat shoes, Cold climate hydraulic oil, Yellow rotating warning lamps, ID key, Fire extinguisher, Tool box, Grease gun holder

Note: This catalog may contain attachments and optional equipment that are not available in your area. And it may contain photographs of machines with specifications that differ from those of machines sold in your areas. Please consult your nearest KOBELCO distributor for those items you require. Due to our policy of continuous product improvements all designs and specifications are subject to change without advance notice. Copyright by **KOBELCO CONSTRUCTION MACHINERY CO., LTD.** No part of this catalog may be reproduced in any manner without notice.

KOBELCO CONSTRUCTION MACHINERY U.S.A. INC.

22350 Merchants Way
Katy, Texas 77449
T: 281-888-8430
F: 281-506-8713
www.KOBELCO-USA.com/

Inquiries To:

Bulletin No. SK210D-NA1503xx

MULTI-DISMANTLING MACHINE

SK210D



Precision and Productivity

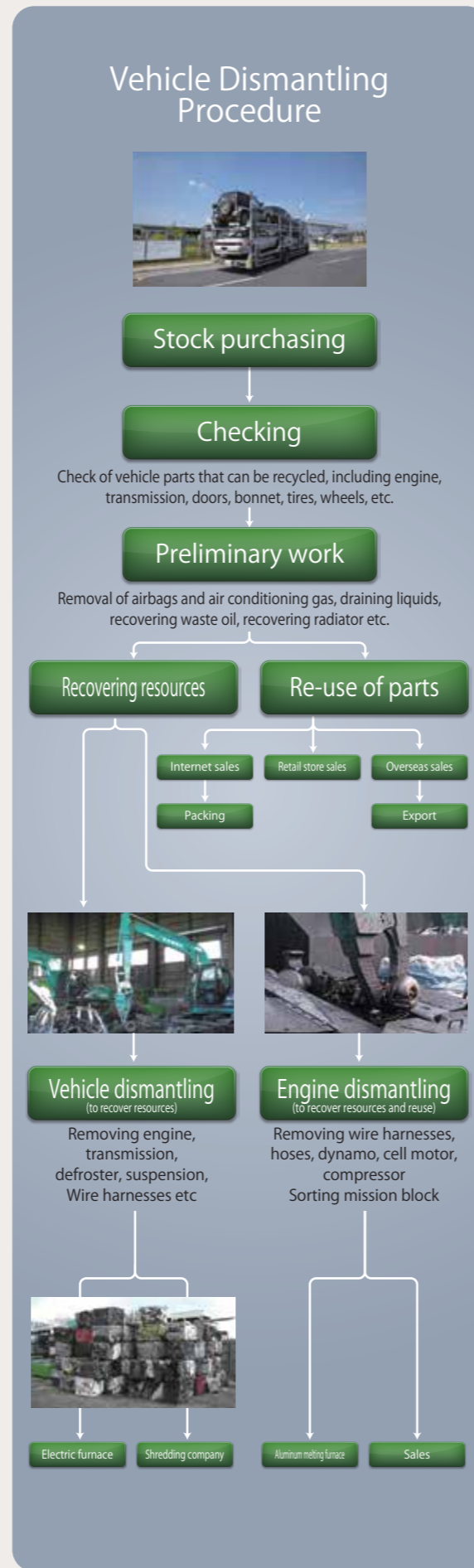
Buzzwords for the new SK210D multi-dismantling machine from KOBELCO, a manufacturer with more than 30 years' experience in vehicle dismantling

Since the first vehicle dismantling machine was developed in 1979, KOBELCO has delivered more than 1,000 of these machines to the market. Technical advances all start from customer feedback, and in this, multi-dismantling machines are no exception.

The requirements are to take apart vehicle bodies, engines and other metal components. The equipment must be safe, efficient and comfortable to handle. The tiniest parts and smallest quantities of metals must be separated for recycling, and precision sorting is essential to get high-purity recycled metals.

To meet customers' needs our equipment has seen constant upgrades. We have now launched a new multi-dismantling machine that represents a groundbreaking evolution with its increased productivity due to savings on fuel.

A machine destined to be a major player in boosting metals recycling in the US.



Disposal of End-of-life Vehicles and Other Metals Dismantling Work

For vehicle dismantling work

Four times* the vehicle dismantling capacity compared with hand dismantling

Vehicle dismantling was once the task of teams of operators using tools and gas cutters. It can now be handled by a single machine, delivering great leaps in productivity and improved recycling rates, and making the job safer and less demanding.

* Vehicle dismantling:
One day's work compared (KOBELCO test figures)



One operative working by hand >> 15 vehicles



Multi-dismantling machine >> 60 vehicles

A Choice of Two Specialized Nibblers For Different Dismantling Tasks

The pointed shape of the multi-dismantling nibbler is suited to small-scale separating and sorting. The vehicle dismantling nibbler (option) has a powerful grab, cutting force and rotational torque.



Multi-dismantling nibbler KVE720PR

Mass: 4,079lb (1,850 kg)
Opening width: 2'4" (720 mm)
Cutting force: 121,172 lbf (539 kN)
Grabbing force (at tip): 44,062 lbf (196 kN)

- * Shaped to handle all types of metal products
- * Tips designed to take firm hold of small parts such as harnesses and electrical fittings
- * Automatic rotating type swiftly reaches ideal approach angle



Vehicle dismantling nibbler KV800PR

Mass: 4,630lb (2,100 kg)
Opening width: 2'7" (800 mm)
Cutting force: 198,281 lbf (882 kN)
Grabbing force (at tip): 83,629 lbf (372 kN)

- * Cutting force can cut through chassis and frame
- * Powerful tip grab force crushes tires and tire rims
- * Strong rotating torque makes easy work of extracting components

For engine dismantling

Speed increased ten-fold over hand dismantling!

Makes simple tasks of taking apart engines, extracting parts, breaking up engine block, and sorting components, for significant gains in working efficiency. And because components are separated with great precision, aluminium ingots for recycling are of high purity, with virtually no zinc or copper content.



* Engine dismantling: One day's work compared (KOBELCO test figures)

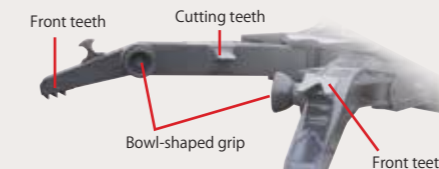
One operative working by hand >> 3 tons



Multi-dismantling machine >> 30 tons

KOBELCO's Innovation Clamp Arm

The clamp arm holds a large item in a firm grip for dismantling. It opens to right and left, and is fitted with grips and teeth to grasp hold of smaller objects for cutting etc.



- Bowl-shaped grip: Can easily grasp and hold objects. Convenient for removing parts while rotating item front to back
- Cutting teeth: Can crush or cut through items with powerful crushing force
- Front teeth: Differently shaped teeth on left and right. Convenient for breaking, bending and tearing



For dismantling complex parts

Separates components of various metals

As well as end-of-life vehicles, all sorts of complex machinery can be dismantled for disposal. The list includes agricultural machinery, motorbikes and bicycles, home appliances such as air conditioners, refrigerators and washing machines, and even vending machines, office equipment, residential facilities and construction rubble.



Fine Control Allows Swift, Point-perfect Positioning

Attachment starts and stops are smooth, with no sudden speed changes in simultaneous operations. The smooth inching control is essential for small-scale work.

Advanced Energy-saving Technologies Lower Fuel Consumption

Fuel consumption is reduced with a new environmental engine and energy-saving hydraulic system. When the machine is in the new ECO mode, fuel consumption is cut by about 16%, compared with S mode of the previous model (KOBELCO test data)

New Spacious Cab Has High-strength Design

Newly designed cab provides a spacious interior and a wide field of view. Its high-strength construction has additional grilles across two sides to protect operator.

